

# where GUESTBOOK<sup>SM</sup> SAN FRANCISCO AND THE BAY AREA

contemporary chefs founded the restaurant with a mission to incorporate quality local foods. Today, the restaurant is a landmark in the culinary Californian landscape, earning one Michelin star and consistently drawing rave reviews. L, D (daily).

[www.chezpanisse.com](http://www.chezpanisse.com). 1517 Shattuck Ave., Berkeley, 510.548.5525. \$\$\$\$.

## MISS PEARL'S JAM HOUSE

Chefs Joey Altman and Robert Baker team up to bring spicy new world cuisine to Oakland's historic waterfront. Enjoy Michael Brennan's eclectic islands design, large outdoor patios and live bands on weekends. B, L (M-F), D (nightly), brunch (Sa-Su). [www.misspearlsjambouse.com](http://www.misspearlsjambouse.com). 1 Broadway St., Oakland, 510.444.7171. \$\$\$.

## SOUTH BAY/ PENINSULA

### DONATO ENOTECA

Just opened in the heart of downtown Redwood City, Donato Enoteca may be new, but it has an authentic Italian taste brought to you by executive chef and owner, Donato Scotti, a native of a small town in Italy. Offering true contemporary Italian cuisine, the restaurant features a variety of dishes that showcase each region of Italy and all its artisanal products, such as fresh imported burrata, prosciutto, grappa and olive oil. [www.donatoenoteca.com](http://www.donatoenoteca.com). 1041 Middlefield Rd., Redwood City, 650.701.1000. \$\$.

### PLUMED HORSE

Perfect for special occasions or small parties, the Plumed Horse is one of the finest restaurants in the Bay Area. Head Chef Peter Armellino brings with him decades of cooking experience, transforming an elegant

dining room into a gallery dedicated to the art of cuisine. An extensive wine list ensures that no one leaves with a parched throat. D (M-Sa). [www.plumedhorse.com](http://www.plumedhorse.com). 14555 Big Basin Way, Saratoga, 408.867.4711. \$\$\$\$.

## BEYOND

### HALF MOON BAY BREWERY

Half Moon Bay Brewing Company is a warm, friendly oceanfront restaurant and pub. The restaurant, which features live music and dancing with picturesque ocean views, reflects the area's unique coastal lifestyle and flavors. Located next to the famous Mavericks surf break. L, D (daily). [www.lmbbrewingco.com](http://www.lmbbrewingco.com). 390 Capistrano Rd., Half Moon Bay, 650.728.2739. \$\$.

### PACIFIC'S EDGE

The award-winning restaurant in Carmel's Highlands Inn offers upscale contemporary American cuisine with French influence, expertly created by the experienced executive chef, Mark Ayers. With soft lighting and awe-inspiring views of the Pacific, it is the perfect spot to spend a romantic evening while enjoying the highest quality food and wine. [www.pacificsedg.com](http://www.pacificsedg.com). Highlands Inn, 120 Highland Dr., Carmel, 831.622.5445. \$\$\$.

### PASTA MOON

With the perfect ambiance to match its delightful California-Italian cuisine, Pasta Moon is a great place for a romantic evening. Try the Spaghetti Frutti di Mare or the Pappardelle Pancetta and you will not be disappointed. L, D (daily). [www.pastamoon.com](http://www.pastamoon.com). 315 Main St., Half Moon Bay, 650.726.5125. \$\$\$.

## Thai Spice Restaurant



*"One of the  
Top Five  
Thai Restaurants."*

—San Francisco Chronicle

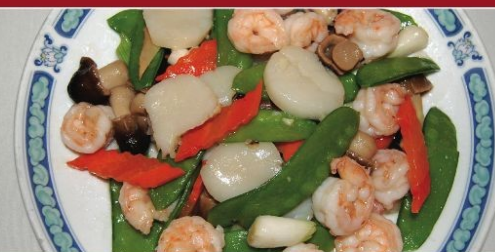
Open Sunday through Thursday, 11:30 a.m. to 10 p.m.  
Friday and Saturday, until 11 p.m.

Complimentary delivery and catering are available.  
Delivery Hours 11:30 a.m. to 10 p.m. Everyday

1730 Polk St., San Francisco (415) 775-4777

Fax: (415) 775-1477 • [www.thaispicepolkstreet.com](http://www.thaispicepolkstreet.com)

## GREAT EASTERN RESTAURANT



AUTHENTIC HONG KONG STYLE  
CUISINE & DIM SUM

649 Jackson Street  
San Francisco, CA 94133

Open Daily: 10:00 a.m. to 1:00 a.m. | 415.986.2500